

JULY 2013



The program has now been finalised for the NSW 2013 Landcare and Catchment Management Forum. The forum will be held at Newcastle with a number of inspirational speakers and terrific field trips being conducted around the region to showcase the environmental values and the amazing work being done by community groups, individuals and agencies to protect and enhance it.

This bi-annual forum is the premier event to showcase sustainability, Landcare and volunteering across NSW and includes the annual Landcare Muster and the NSW State Landcare Awards Dinner.

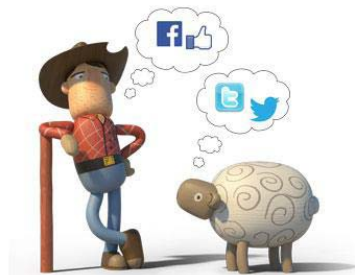
Don't miss the chance to gather with up to 400 people from Landcare and community groups, farmers, Aboriginal heritage groups, regional catchment bodies, industry and government representatives from across NSW and Australia.

For more information go to <http://www.landcarecmaforum.com.au/program.php>

### National Landcare Webinar Grow your social media skills

Are you involved in Landcare and interested in knowing more about the benefits of using Facebook and Twitter?

If so, Landcare has the ideal webinar (internet based seminar) for you. Join in on Wednesday, July 31st, at 12 Midday (AEST) for a free hour long webinar which will show you how and why Landcarers are currently using Facebook and Twitter, and help guide you along the way to building successful and engaging social media profiles.



To read more <http://www.nlss.com.au/26-all/149-lal-socila-media-webinars-2013>

**Connect on facebook**

**Not yet on Twitter**

### RIVERS: Linking Water – Energy – Food

Brisbane, Australia | 23-26 September 2013

Rivers and other freshwater systems are central in the production of food and many forms of energy. As a result of population growth and climate change, the finite freshwater supplies become scarcer; hence the holistic and sustainable management of water resources is essential.

The **16th International Riversymposium** provides an opportunity to look at the linkages that rivers provide to water-energy-food. It will also allow dialogue to continue and build the knowledge base and capacity to inform policy decisions that must include trade-offs between river basin protection and sustainable water, energy and food security.

<http://riversymposium.com/register/>

### What's in the Box?

By Kathryn Kermode (LFW member)

I've spent the day learning about the creatures that require hollows for habitat and making a habitat box for gliders. For me the box making was the highlight of an interesting day spent with Tara and Peter at Northern Landcare Supports Services office in Kyogle.



Read More at <http://www.nlss.com.au/projects/land-for-wildlife/147-what-s-in-a-box>



Voting for the 2013 NSW Landcare People's Choice Award **closes on August 25th**. With over sixty entries across nine diverse categories, there are plenty of worthy winners, however it's up to the public to decide who will be this year's People's Choice.

Have your say by voting for the nomination you believe represents the most outstanding contributions to Landcare in New South Wales. Please note that you may only vote for one entrant and that you may only vote once. **So look out for Kyogle's 'Individual Landcare' Award nominee Susan Somerville.**

To Vote go to [http://www.landcareonline.com.au/?page\\_id=11525](http://www.landcareonline.com.au/?page_id=11525)

### National Landcare Webinar - with Allan Savory

Allan Savory is often cited as one of the fathers of holistic management and is the Founder of the Savory Institute. Whether you think his approach is compelling or controversial, most people agree that he is thought provoking and a great presenter that engenders discussion. Please join the national landcare facilitator at 12.00 noon EST on Friday 16th August for a free webinar discussion with Allan Savory. The target audience for this webinar is farmers/land managers and others with an interest in Landcare.



**Topic:** Webinar discussion with Allan Savory

**Presenter:** Allan Savory & Brett de Hayr

**Date:** Friday, 16th of August 2013

**Time:** 12pm - 1pm AEST

For more information and to register

[http://www.landcareonline.com.au/?page\\_id=10479](http://www.landcareonline.com.au/?page_id=10479)



Invasive Animals CRC Photography Competition 2013 **closes 30 September 2013** so get your cameras out and start snapping.

More info at <http://www.invasiveanimals.com/feral-photos/>

biophilia  
an exploration of our connection with  
nature and all living things

Whian Whian Landcare invites you to submit  
art works for its inaugural  
'Biophilia' exhibition  
to be held at Goanna Bakery  
for Biodiversity month, September 2013

Opening event Saturday 7th September -  
presentation and prizes  
Art works to be submitted by 5pm 6th September

Enquiries -  
Emma Stone 6689 5472 or  
Valerie Thompson 0413 944 745

Even the cows are interested in Landcare!



If you would like to receive this newsletter, email us at [info@nlss.com.au](mailto:info@nlss.com.au). Feel free to pass a copy onto anyone you know that may be interested and encourage them to subscribe. If you would like to contribute to future newsletters feel free to contact us on 66323722.