

NORTHERN Landcare

SUPPORT SERVICES

Richmond Upper Clarence Landcare News Volume 2, Number 5—August 2011

A project of the



In this issue

- Pg 2 Funding opportunities
- Pg 4 What's coming up
- Pg 6 What's been going on

Calendar of Events

September 6th-10th

Weedbuster Week

September 1st

Woodenbong Weed Expo

September 4th

Big Scrub Rainforest Day

October 10th

Foodlinks Biological Farming Day

Do you have two minutes
to complete our survey?

Go to
[www.surveymonkey.com/s/
MYHP93Y](http://www.surveymonkey.com/s/MYHP93Y)

Help us to be the
organisation that you
want us to be!



Like us on
Facebook

www.facebook.com/northernlandcare

Lock the Gate on Coal Seam Gas

By Drew Hutton, President, Lock the Gate Alliance

Over one-third of this continent is underlain by coal seams and everywhere there is such a seam either a coal or a coal seam gas company has its eyes on it. It seems as though every little valley from central Queensland to the Otways in Victoria has a company with a petroleum exploration lease (PEL) over it and is trying to persuade local landowners to sign access agreements that will allow them onto the land to explore for underground gas.

In Queensland this has led to the tragic situation where whole sections of the bush are peppered with gas wells, pipelines, service roads, compressor stations and other gas infrastructure. Farmers' activities are impeded, they can't sell their properties and they face the prospect, along with many of their neighbours, of losing their bore water or having it contaminated. This large-scale tragedy is set to be unleashed upon NSW. In this region PELs are everywhere and Metgasco is planning to construct a major pipeline from Casino, through the Border Ranges to Ipswich.

I attended a meeting of about 120 local people at Lynchs Creek on 14 August. The people there were experiencing reactions ranging from concern to outrage at the prospect of their beautiful area

being turned into a gas field and a massive gas pipeline corridor being bulldozed through it. There was no need to call for a motion to lock the gate because everyone there had obviously made up their minds to do just that and most already had a "lock the gate" sign hanging on their front fence.

I believe, locking the gate is the only rational and effective response to this mad gas rush. Governments have simply rolled over and allowed this industry full rein, hoping to cash in on royalties but most Australians, when they hear what is happening, are horrified. Communities across the country are refusing to negotiate access with the companies. They have locked their gates and increasingly, people in the cities are supporting them. It is impossible for any fair-minded person, from either country or city, to hear of this situation and not be moved by it. A whole new ethic of custodianship is emerging and people who love this country and want to protect significant elements of our natural and cultural heritage are adopting the locked gate symbol and converting into something far more powerful than the desperate tactic adopted by Queensland farmers in late 2010. No political party can afford to ignore this new spirit.

Your NRM Community
Support Team



Tara Patel
Mobile: 0428 270 123



Amanda Pollard-Harris
Mobile: 0429 070 574



Bob Jarman
Mobile: 0429 320 012

FREE

**To Landcare or not-
for-profit group**

- ◆ One colour Canon printer
- ◆ One HP OfficeJet 5610 All in one (photocopier, scanner, fax, printer)
- ◆ One black & white Brother printer.

Call 6632 3722

Funding Opportunities

Subtropical Farm Forestry Association

:: Bringing the forest back to the farm ::

ForestLinks Project

The ForestLinks project has been developed to help landowners plan and manage farm forestry plantings.

The project will involve 50 farmers in selected Local Government Areas to participate in the development of farm forestry plans for their property—with the option of a grant, matched in-kind, to do on-farm endemic tree plantings, and conduct additional on-ground works such as management of existing plantings and weed management for landscape conservation. Each farmer will progressively receive a grant of up to \$3,000 throughout the project.

The aims of the project include the establishment of 250ha of best practice farm forest cover that link an additional 5,000ha of fragmented native forest and to increase conservation and biodiversity management.

This ForestLinks project is funded by the Commonwealth Government's Caring for Our Country program.



CARING
FOR
OUR
COUNTRY

Habitat Action Grants

Angling clubs, individuals, community groups, local councils and organisations interested in rehabilitating fish habitats in freshwater and saltwater areas throughout NSW can apply for grants. Habitat rehabilitation projects which may be funded include: removal or modification of barriers to fish passage; rehabilitation of riparian lands (river banks, wetlands, mangrove forests, saltmarsh); re-snagging waterways with timber structure; removal of exotic vegetation from waterways; bank stabilisation works; and reinstatement of natural flow regimes.

Habitat Action Grants are available in August each year and require the completion of a habitat-specific Funding Application form. Funding applications must relate to the enhancement of recreational fishing through the improvement of fish habitat. Applicants may apply for a small grant (maximum \$1,000 excluding GST) or a large grant (maximum \$40,000 excluding GST). Successful projects are usually funded for one year. For further information or to obtain a Funding Application form contact the Habitat Action Grants Administrator on fish.habitat@industry.nsw.gov.au or ring (02) 6626 1107.



Recreational
Fishing Trusts

Northern Rivers Catchment Management Authority Conservation Farming Incentives



The target areas for this years project are the intensively farmed Mid Richmond and Upper Clarence Floodplains, from west of Coraki to west of Kyogle on the Richmond floodplain, and the Upper Clarence Floodplain and surrounding cropping lands.

The project is specifically aimed at providing growers in the project area with greater access to conservation farming equipment and technology and this year the project is encouraging applications from grower organisations and grower groups, to encourage wider interaction and info exchange between farmers.

For more information about the project including funding available and eligibility criteria, download the Project Guidelines and Application form go to <http://www.northern.cma.nsw.gov.au/>

All works must be completed by May 31st 2012. Applications must be received at the NRCMA Grafton office by no later than **4.00pm Monday 19th September 2011.**

Northern Rivers Catchment Management Authority Soil Health For Horticulture



The NRCMA Soil Health for Horticulture project aims to encourage horticulturalists to improve and maintain soil health for better environmental and production outcomes. The project funded by Caring for our Country and the NSW Government's Catchment Action NSW is seeking applications from specific industries including blueberries, bananas, macadamias, vegetables, coffee and other perennial horticulture crops in the in targeted areas, including Alstonville Plateau and surrounding districts, Cudgen, Coffs Steep lands, Comboyne plateau and North Coast banana lands. For more information go to <http://www.northern.cma.nsw.gov.au/>

Natural Boost

For communities...



Be Natural Cereals and Snacks has supported the Landcare movement since 2010 by helping local Landcare groups tackle environmental issues.

Six groups were funded by Be Natural in 2010, and this support has since evolved into an open community grants round which is **currently offering funding of up to \$5,000** to 25 groups to continue work on an ongoing project.

The Be Natural Landcare grants round is open until October 10, and all information, criteria and application forms can be found on www.landcareonline.com.au

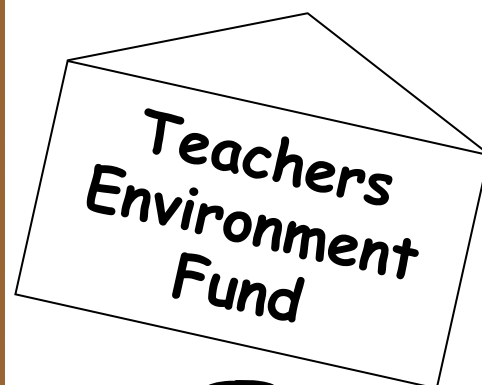
Our schools have an essential role in contributing to sustainability, not only in reducing their environmental impact but ensuring our future leaders recognise its importance.

Through the Teachers Environment Fund, Teachers Credit Union aims to support projects benefit the environment and provide a practical teaching example.

It is available to public schools and TAFEs in NSW, ACT, NT and WA. Ideas include:

- Energy and water saving projects
- Composting and recycling projects
- Outdoor and biodiversity projects.

For more info go to www.teachersenvirofund.com.au





Weedbusters Week 2011
Prevent, Restore, Recover
September 6th-10th
Call 6632 3722 for more info

Staff from Northern Landcare Support Services and Far North Coast Weeds will be out and about so come and talk to us to find out more about weeds and Landcare activities in your area. Bring along weeds to ID.

6th September—11am meet at the Memorial Park

Coraki Riverbank Walk - discover what weeds are invading our river, how to control them and what should be there instead.

8th September

Outside the new Kyogle IGA, weeds display and stall

9th September

Casino Woolworths Complex, weeds display and stall



Tropical Soda Apple,
photo by Bec Millar, NSW DPI

Free BBQ!
Please RSVP
6623 3833

**Upper Clarence
Combined Landcare Inc.**



Upper Clarence Weed Expo

Woodenbong Community Hall, Supper Room

9:30am Thursday 1 September 2011

Our Biggest Threats?

Giant Rats Tail – could it be much worse than Giant Parramatta Grass? Deadly Green Cestrum. Nuisances with huge potential.

Lets stop chasing our tails

Looking for smart approaches on the property and across the catchment

Do we have a problem?

New weeds on our doorstep and ready to bolt

All in one boat, where are the lifejackets? Who can help?

Speakers include: Jim Willmott, FNC Weeds; Rod Ensby, NSW DPI; Harry Rose, Education Officer, NSW DPI; Trevor Rose, Beef Cattle Officer NSW DPI; Geoff Messer, Dow AgroSciences; Kim Curtis, FNCW, Rhett Patrick, FNCW; Neil Rossington, Tenterfield Weeds Officer; Tara Patel, NLSS; Terry Moody, Upper Clarence Combined Landcare.

**Field Day—Biological Farming Methods
Integrated into Conventional Systems**

This project has been working with 4 farms on farm based composting systems and the living mulch system. Organic consultant and technical advisor to the project Dave Forrest will be available to provide information on the systems adopted.

10am to 1.00pm, 10 October 2011

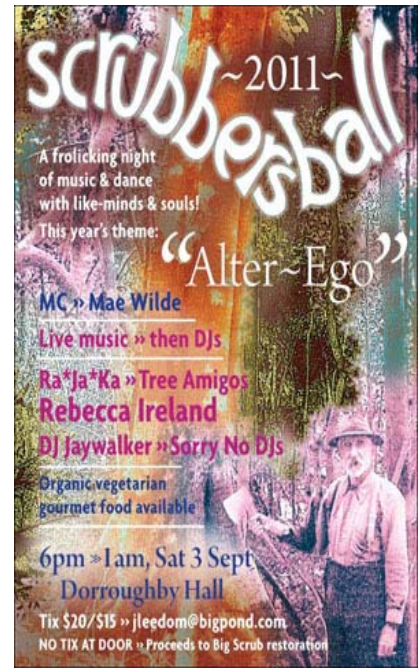
Lunch provided

Bookings essential phone 66323722



Rocky Creek Dam revisited for the 13th Annual Big Scrub Rainforest Day Sunday 4th September 2011

Workshops, stalls and exhibits—come see NLSS! BYO picnic.
Children's activities from 10am. Gold coin donation at entry.
www.bigscrubrainforest.org.au



Hotspots Fire Program

Do you live in the Lynches Creek and Collins Creek area?
You are invited to join the Hotspots Fire Program

The program is run over 2 day workshops and a 3rd day demonstration fire for ecological outcomes. It is aimed at empowering participants to plan for protecting farm assets, homes and the diversity of native plants and animals on their land.

1st workshop: 29th September

2nd workshop: 2nd December

Fire Demonstration: mid 2012



No charge but limited numbers—for more info call NLSS on 6632 3722

Biological Farming Course Grazing and Cropping

When: Starting Wednesday 12 October 2011- one day per week for 9 weeks—9.30 AM to 4.30 PM

Where: North Coast TAFE, Casino, morning sessions; afternoon sessions in the field.

Teacher: Dave Forrest

Class members will evaluate soil health and management practices on their respective farms. Members will then develop a biological farming plan for their property. Farmers who complete the course and submit the course assessment (a biological farming soil management plan for their farm) will be reimbursed the \$250.00 TAFE course fee.

For course detail and dates please email: info@soilcare.org or phone Bonnie Walker on 02 6628 1788 or 0448 026 230.

Sponsored by SoilCare through funding from the Australian Government's Caring for our Country.



Cedar Point Landcare Group



Group planting day in 1993

Cedar Point Landcare Group has called it a day after nearly 20 years as a registered Landcare Group.

The group initially worked on a planting next to Cedar point hall and the turnoff to Lismore off the Summerland Way. This planting on both sides of the Summerland Way has become a green entrance to Kyogle. It was a joint project with 'The Forest Protection Society' who are now 'Timber Communities Australia'

This initial work encouraged the farmer based group to obtain funds and deliver environmental initiatives on their own farms. Every member family accomplished a project on their own farms. The Group also sponsored a large river erosion project at the Risk. The group also pioneered the Dung Beetle introduction to the Upper Richmond and produced a pamphlet on Dung Beetles on the North Coast which is still used today.

Cedar Point members have elected to join Kyogle Landcare Group and will continue their maintenance of the Cedar Point planting as members of Kyogle Landcare Group.

Chairperson Bob Jarman said "the Group has achieved what it set out to do and members are looking forward to a lower level of involvement but are keen to maintain their projects into the future" Bob also thanked all families involved over the 20 years for their commitment and time to the Landcare ethic.

NRM/ Landcare Community Support

The Northern Rivers Catchment Management Authority continues to provide natural resource management (NRM) Community Support in the Kyogle and Richmond Valley Council areas.



Northern Landcare Support Services (NLSS) is a small local company with many years experience in providing community support in the area of Landcare and NRM.

Bob Jarman, Tara Patel and more recently Amanda Pollard-Harris are faces you would recognise as the Community Support Officers.

Their work has always been about working with farmers, landholders, Landcare groups and schools, facilitating knowledge, skills and information in the area of NRM. They have also assisted many people and groups to obtain funding for environmental projects. Their broad network allows them to work across the community and link where needed with government departments, local councils, NGO's and businesses.

NLSS through Tara Patel and Amanda Pollard-Harris, will continue to provide NRM Community Support across the Richmond Valley Council area and east of the range in the Kyogle Council area.

Bob Jarman and Peter Stone will focus on project management and bush regeneration services.

Community Support West of the Range in the Kyogle Shire will be serviced by Upper Clarence Combined Landcare with Terry Moody as the CSO.

Environmental Repair – The unseen work in and around Kyogle



Greencorp planting at the lookout

Through the Northern Rivers CMA and the Land & Property Management Authority (LPMA) funds have been made available for creekbank restoration and Crown Lands in and around Kyogle.

If you take a walk through the Kyogle Recreation Area Reserve (take the path from the Information Centre across the bridge and follow path under the bridge and continue along path) you will follow Fawcetts Creek. For over ten years NLSS, Kyogle Landcare Group and the Reserve Trust have been working to reduce the weeds in the reserve. Many of the main weeds have now been controlled (Morning Glory, Balloon Vine, Madeira Vine, Camphor Laurel, Chinese Celtis, Honey Locust, Green Cestrum & Trad). Native plants are regenerating together with some plantings.

NLSS was engaged to carry out weed control work on Crown Lands for Kyogle Council and were able to clean up some nuisance remaining Mulberry Trees and Cats Claw Creeper. The Showground area along the creek was also treated for Chinese Celtis and Honey Locust.

At the Lookout woody weeds were removed and the Greencorp Team have planted low growing native plants to minimise soil erosion.

The health of our environment is everyone's responsibility. Please consider what is in your garden & take garden clippings to the tip for composting.

The Dirawong is an area of Crown Land made up of coastal heath, wetlands and coastal headlands of over 200ha adjoining the village of Evans Head. It has significant Aboriginal and European cultural history embedded in its sands.

Local people and visitors alike can enjoy the experience of uninterrupted views of the coast, quite and secluded fishing spots, uncrowded beaches surrounded all the time by coastal heath vegetation that as spring approaches is exploding with colour.

The Reserve Trust has recently received funding through the NSW Governments Environmental Trust Program for a 3 year project to continue on the restoration work already accomplished. The aim is to rid the Dirawong of Bitou Bush, Glory Lily and introduced Coastal Tea Tree, legacies from the era of sand mining, using methods that promote conditions that encourage regeneration of endemic native plants.

The low impact restoration methods being used have been developed over many years by Ellen White an earlier member of the Trust and who continues to provide her expertise and labour on the Dirawong.

The Trust encourages people to assist the project when visiting by taking home any rubbish that is brought in and that exotic plants and seeds are not carried onto the Reserve. Seed is easily spread from being attached to clothes and shoes.

The regeneration team is usually on site on Wednesdays and welcome your interest.

As well as a great place to view heath flowers the Reserve is an important habitat for wildlife. Ellen has recorded 61 species of birds, 15 species of mammals and 13 species of reptiles known to inhabit the Dirawong.

There are 27 species of plants occurring that have special ecological significance by being endangered or vulnerable through to uncommon in the area.

The Trust has engaged Northern Landcare Support Services (NLSS) to manage the project. NLSS has engaged the local team of 4 regenerators who have been working on the reserve to continue restoration work.

Austspray a specialist team has been brought in to undertake the difficult Bitou control on the cliff faces of Piano Rock, Joggley's Gorge and The Bluff.

Dean Tattle Director of Austspray said " he was privileged to work in such a beautiful area" He added "their work is now easy to see with much of the Bitou Bush now brown and dead at Piano Rock and Joggley's Gorges"

NLSS will be showcasing environmental works within the Evans Head region and you can meet and talk to some of the people involved at the Evans Head Markets on Saturday 24th September.

Dirawong continues to weed out unwanted plants – a story of restoration at Evans Head

The Dirawong Reserve Trust is another step towards its vision in assisting the Dirawong Reserve to repair to its more natural state.



Dirawong weed control area—Joggley's Gorge



Joggley's Gorge after weed control

Bonalbo farmer Bruce Ralston has recently completed an Australian Government funded Caring For Country Community Action Grant Project. In partnership with the West of the Range Landcare Inc. The project named 'Managing Creeks and Cattle for Biodiversity at 'Overton' Northern NSW'. The project involved establishing a demonstration site on a working cattle property to observe different approaches to creekbank management.

At a field day held on the property on 26 July 2011, Bruce was able to show other farmers how he addressed the main issues of reducing impacts of stock access on biodiversity and bank erosion on Sandy Creek.

500metres of the creek was fenced, using electric fencing. 1500 native plants were planted in one section. The other section fenced only had weed control to allow natural regeneration to occur. Bruce aims to reintroduce managed grazing after approximately 3 years once the native plants are large enough.

Bob Jarman and Tara Patel from Northern Landcare Support Services led the discussion on riparian management issues. Trevor Rose and Bede Clark from NSW DPI provided important technical input as did Rhett Patrick the local weed inspector from Far North Coast Weeds.

Community Action Grants in action



Overton Day participants inspecting riparian zone.

Tried to call in but
the door was
shut???

Sorry about that!

*Community Support is a project
of the Northern Rivers CMA*



Because of new staffing arrangements there may be times that our office is not open during the week.

If you are keen to catch up in person, please call ahead and make an appointment.

If you have an enquiry please email (details below)

If you'd like a chat, please call the office or our mobiles and leave a message and we will get back to you ASAP.

If you're looking for information on upcoming events or other stuff please check our website www.nlss.com.au

If you'd like to tell us how great we are try [facebook.com/northernlandcare](https://www.facebook.com/northernlandcare)

Don't be sad when you can't find us—it probably means we're out and about trying to save the world, one step at a time 😊

Richmond Upper Clarence Landcare News
Northern Landcare Support Services
PO Box 410
Kyogle NSW 2474

POSTAGE
PAID

AUSTRALIA

*A project of the
Northern Rivers Catchment Management Authority*



Richmond Upper Clarence Landcare News August 2011

Prepared by Northern Landcare Support Services for Landcare Groups & landholders in the Richmond & Upper Clarence Catchments. **All contributions to the newsletter are welcome.**

This Newsletter has been printed on 100% recycled paper.

The articles in this newsletter do not necessarily reflect the views of Northern Landcare Support Services or Northern Rivers CMA.

If you would like to receive a free electronic copy, please contact:

Northern Landcare Support Services P/L.

Office (02) 6632 3722 info@nlss.com.au

www.facebook.com/northernlandcare

Bob Jarman 0429 320 012

bob@nlss.com.au

Tara Patel 0428 270 123

tara@nlss.com.au

Amanda Pollard-Harris 0429 070 574

amanda@nlss.com.au

